

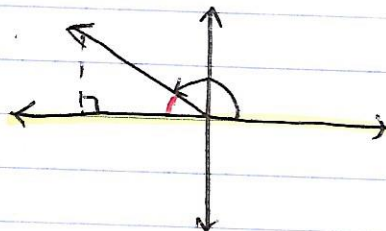
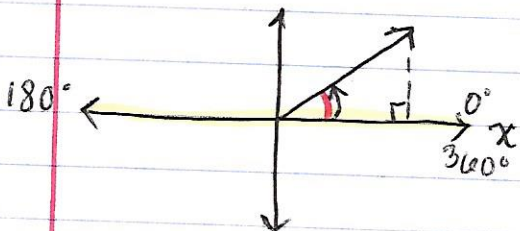
Reference Angle

Reference angles

When reference angles are in quadrants other than QI, a triangle is always drawn to the x-axis. *Should always be positive*

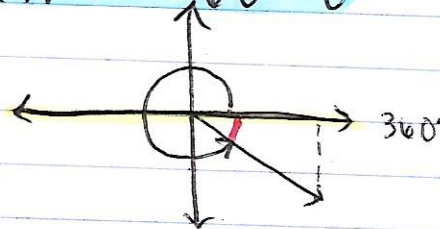
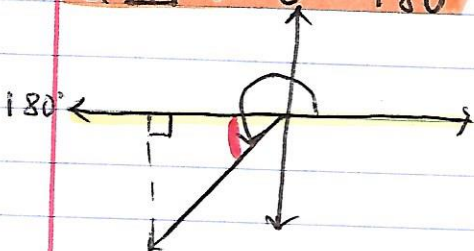
Q I : θ

Q II : $180^\circ - \theta$



Q III : $\theta - 180^\circ$

Q IV : $360 - \theta$

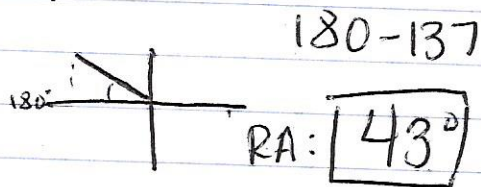
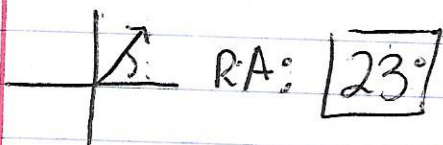


Ex. 1

Find the reference angle:

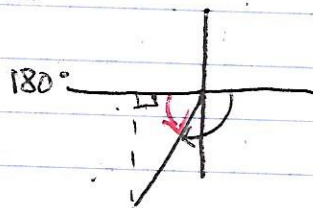
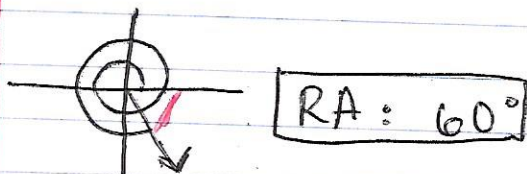
a) 23°

b) 137°



c) 660°

d) -95°



* Use Coterminal:

$660 - 360 = 300^\circ$

$360 - 300 = 60^\circ$

RA: 85°